

MORRIS CIRCLE



LOT 1

4 BEDROOMS / 3.5 BATHS
(OPTIONAL 5 BEDROOMS / 4.5 BATHS)

READY SUMMER 2007

Exclusively Marketed By

K

The Kimberly Company
Residential and Commercial Real Estate

Kimberly Bruce

(404) 808-7719

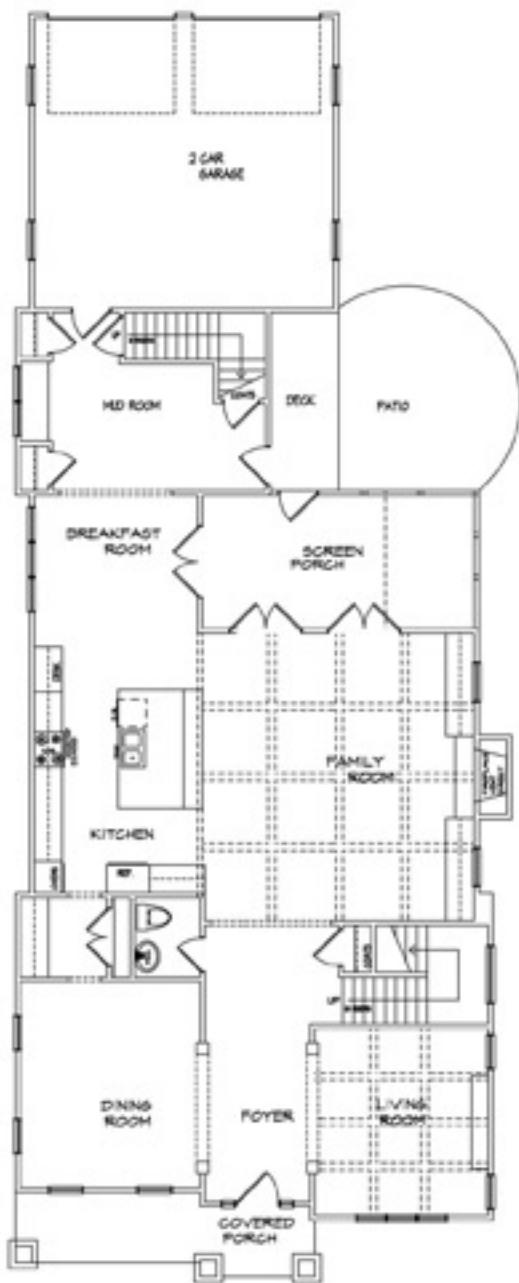
Fax (404) 795-0596

kimberly@thekimberlyco.com

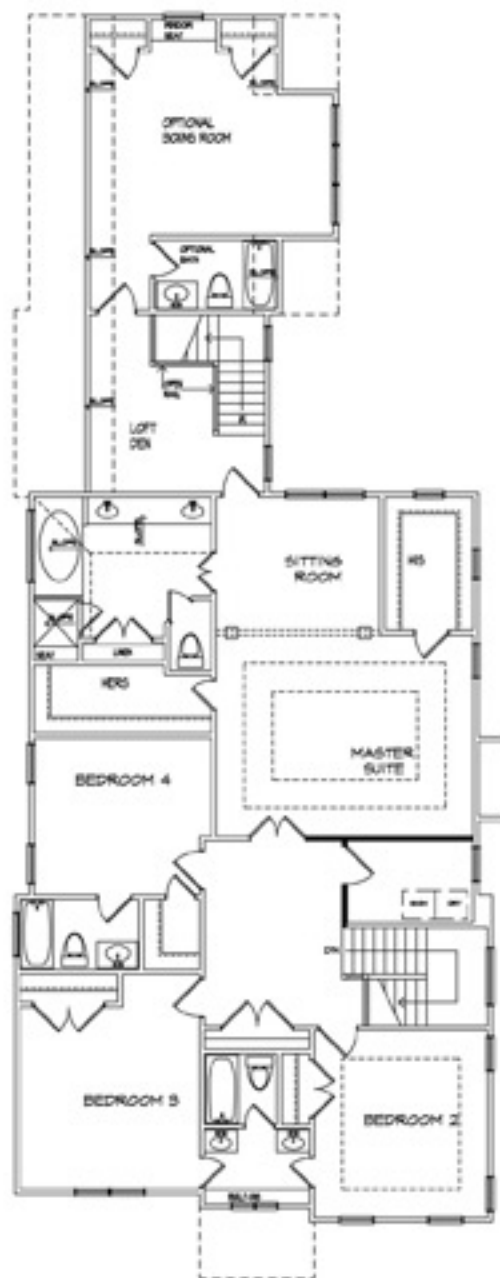
Built By



Locke, Inc.



FIRST FLOOR



SECOND FLOOR

THIS LOCKE BUILT HOME WILL HAVE PROFESSIONAL LANDSCAPING AND TIMED IRRIGATION SYSTEM. FEATURES INCLUDE: OPEN KITCHEN WITH FRENCH COUNTRY CABINETS, STAINLESS STEEL PROFESSIONAL SERIES APPLIANCES, GRANITE COUNTERS, STONE BACKSLASH AND PANTRY; LARGE FAMILY ROOM WITH BUILT-IN CABINETS AND GAS FIREPLACE; SCREEN PORCH WITH TILED FLOOR; FORMAL DINING ROOM; OPEN OFFICE/LOFT AREA; MASTER BEDROOM WITH SITTING ROOM; LARGE MASTER BATH WITH STONE TILE, GRANITE COUNTERS, WHIRLPOOL TUB AND SPA STYLE SHOWER; SPACIOUS LAUNDRY ROOM LOCATED ON SECOND LEVEL WITH TILED FLOOR AND CABINETS; MUD/KEEPING ROOM WITH ADDITIONAL CLOSET SPACE; PREINSTALLED GE SMART SYSTEM WITH PHONE, CABLE, SECURITY, AND SURROUND SOUND.

LOCKE BUILT HOMES CONTAIN 10' CEILINGS ON MAIN, HARDWOOD FLOORS, WALK-IN CLOSETS FOR EACH BEDROOM, 8' INTERIOR CRAFTSMAN DOORS, ZONED HVAC AND DESIGNER LIGHTING THROUGHOUT.


The Kimberly Company
 Residential and Commercial Real Estate
Kimberly Bruce
 (404) 808-7719
 Fax (404) 795-0596
 kimberly@thekimberlyco.com

