

SHERWOOD COMMONS



LOT 4
LOCKE BUILT CRAFTSMAN HOME
4 BEDROOMS / 3.5 BATHS
FULL BASEMET

READY SPRING 2007

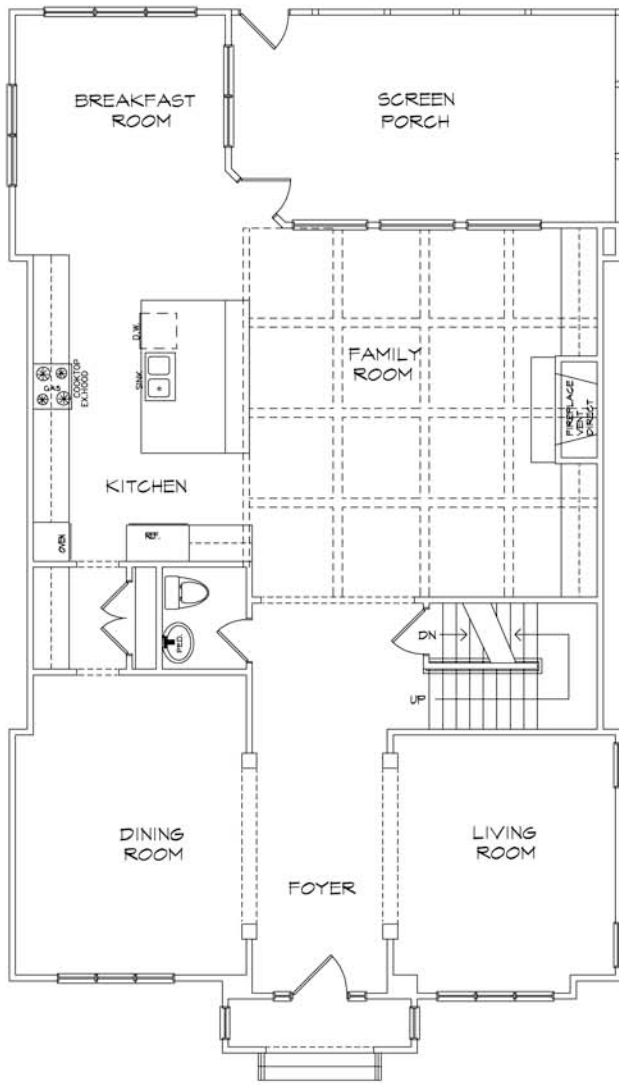
Exclusively Marketed By

K
The Kimberly Company
Residential and Commercial Real Estate

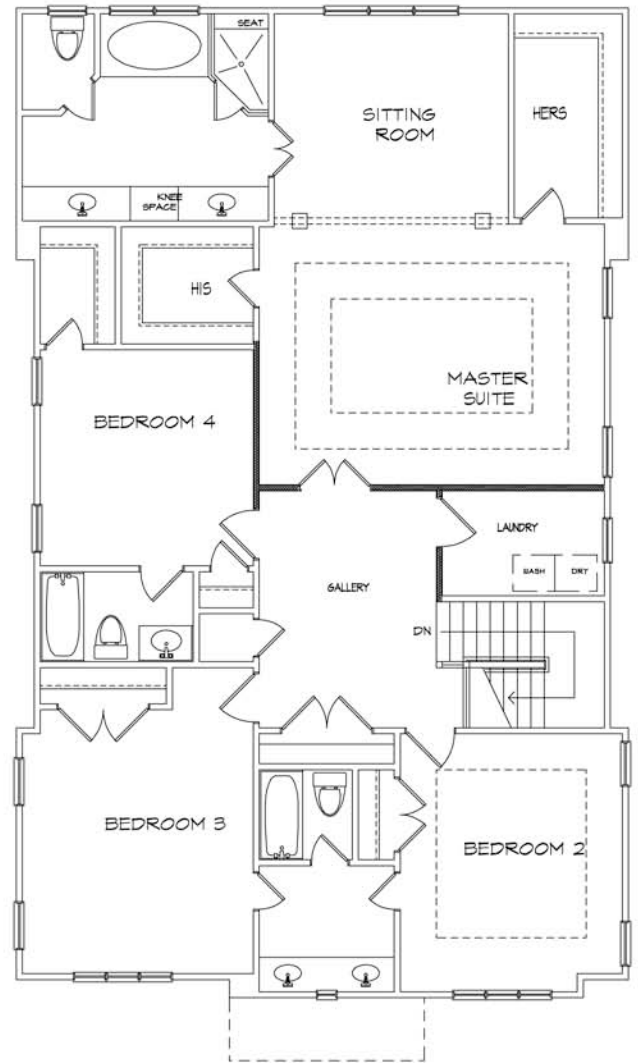
Kimberly Bruce
(404) 808-7719
Fax (404) 795-0596
kimberly@thekimberlyco.com

Built By





FIRST FLOOR



SECOND FLOOR

THIS 4 BEDROOM, 3½ BATH LOCKE BUILT HOME WILL HAVE PROFESSIONAL LANDSCAPING AND TIMED IRRIGATION SYSTEM. FEATURES INCLUDE: OPEN KITCHEN WITH STAINED WOOD CABINETS, STAINLESS GE PROFILE APPLIANCES, GRANITE COUNTERS, STONE BACKSPLASH AND PANTRY; LARGE FAMILY ROOM WITH BUILT-IN CABINETS AND GAS FIREPLACE; SCREENED PORCH WITH TILED FLOOR, FORMAL DINING ROOM; PRIVATE STUDY; MASTER BEDROOM WITH LARGE SITTING AREA; MASTER BATH WITH STONE TILE, GRANITE COUNTERS, WHIRLPOOL TUB AND SEPARATE SHOWER; SPACIOUS LAUNDRY ROOM LOCATED ON SECOND LEVEL WITH TILED FLOOR AND CABINETS.

LOCKE BUILT HOMES CONTAIN 10' CEILINGS ON MAIN, HARDWOOD FLOORS, WALK-IN CLOSETS FOR EACH BEDROOM, ALARM SYSTEM, 8' INTERIOR CRAFTSMAN DOORS, ZONED HVAC AND DESIGNER LIGHTING THROUGHOUT.


The Kimberly Company
 Residential and Commercial Real Estate

Kimberly Bruce

(404) 808-7719

Fax (404) 795-0596

kimberly@thekimberlyco.com

